

Enhanced Benefits for Easier Access and More Flexibility.

That's Clever!

Due to the federal declaration of health emergency caused by the COVID-19 pandemic, Clever Care has enhanced certain benefits to improve our members' access to care and offer greater flexibility. Benefit enhancements will remain in effect for the duration of the public health emergency.



Non-Emergency Transportation is now covered at **\$0 copay** – 24 one-way trips (25 miles per trip).



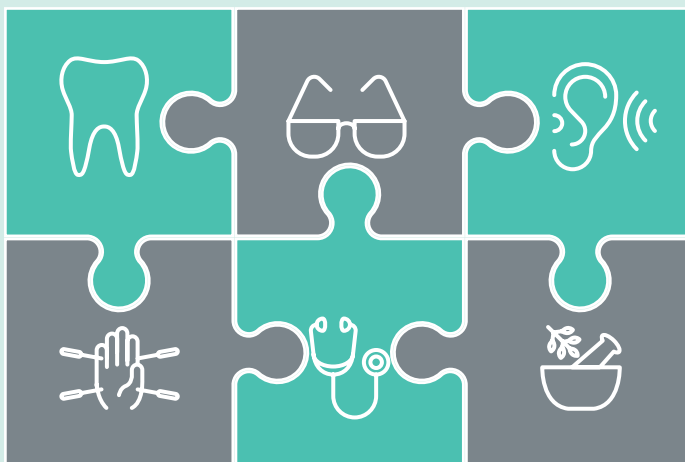
Ambulance has decreased to **\$20 copay** for ground emergency transportation.



Members can now access their **dental benefits** out-of-network.*

A hassle-free Medicare Advantage Plan for your complete well-being

In keeping with our commitment to our members' overall health, all Clever Care members have access to our full package of Eastern and Western supplemental benefits.



- Up to **\$1,600** for dental services
- **\$300** vision allowance every two years
- Up to **\$1,500** allowance for hearing aids per ear per year
- **Unlimited** acupuncture
- Up to **\$420** allowance for over-the-counter supplies, including herbal supplements
- **\$0 copay** for doctor and specialist visits

*Member out-of-pocket costs may be lower when using in-network providers.

Clever Care Health Plan, Inc. is an HMO plan with a Medicare contract. Enrollment depends upon contract renewal.